

HEEGE PLACE APARTMENTS

7028 Heege Road ▪ Suite 100 ▪ St. Louis ▪ MO ▪ 63123 / PO Box 270271 ▪ St. Louis ▪ MO ▪ 63127
email: info@heegeplace.com ▪ website: www.heegeplace.com
Ph(314)729-0479 ▪ Fx(314)842-2772

1 & 2 Bedroom Garden Apartments

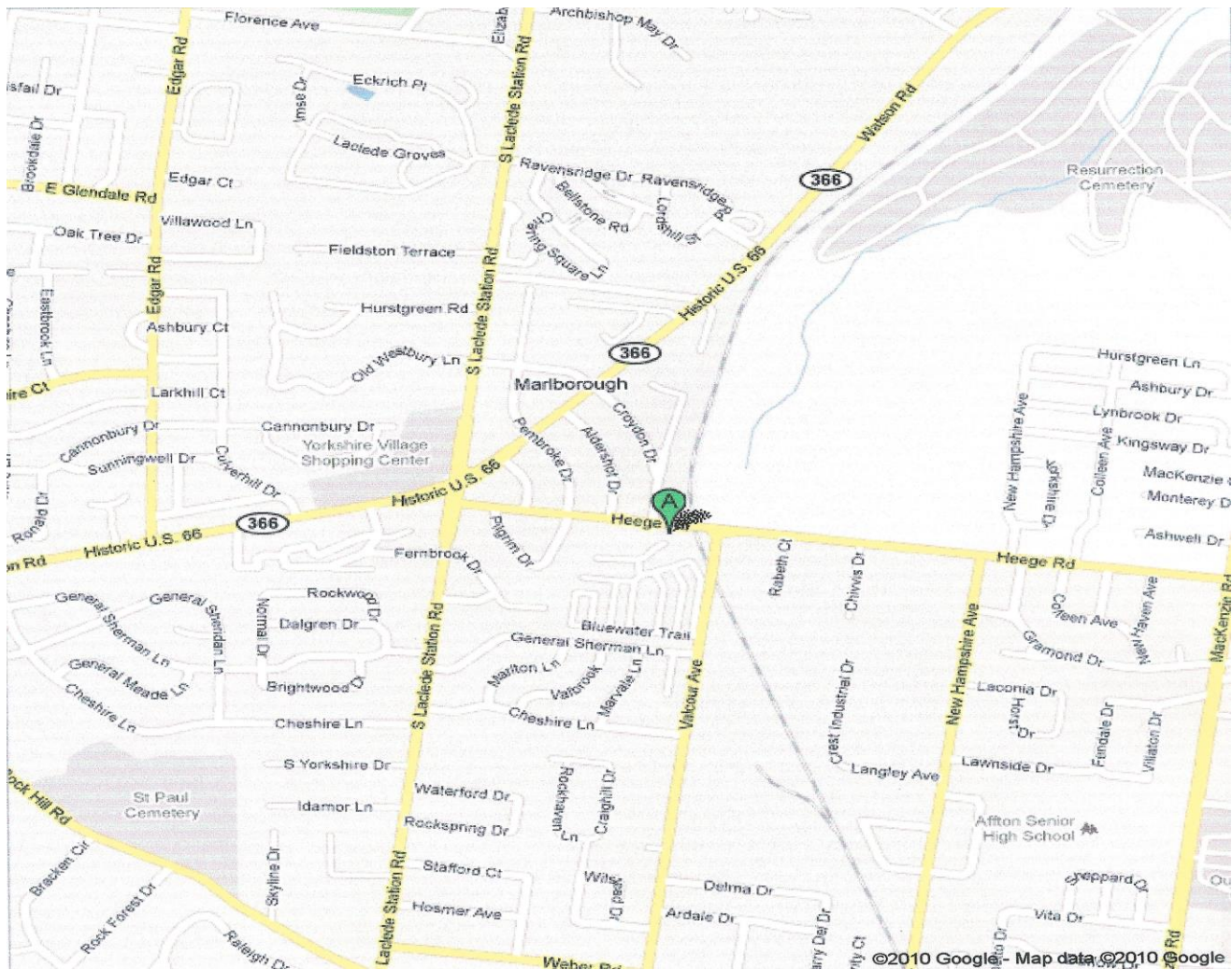


- AVOID THE 1% ST. LOUIS CITY EARNINGS TAX LIVING HERE!!
- Every apartment includes central air and heat as well as a refrigerator and range
- We are pet friendly, accepting cats and dogs up to 25lbs at full maturity
- We offer flexible leasing, security deposit, and payment options
- Within minutes of numerous colleges and 15 minutes to Clayton
- Improve your credit score with us through our affiliation with Experian



Property Features

- | | |
|--------------------------------------|------------------------------------|
| Bark Park | Newer Roofs |
| Pet Friendly | Carpet & Vinyl |
| Coin Laundry | Swimming Pool |
| Off-Street Parking | Resident Manager |
| On-Site Maintenance | Cable Connections |
| Free Storage Lockers | Close to Public Trans |
| AAA Rated Affton Schools | 8 min to Webster Univ |
| Washer/Dryer Hookups Available | 15 min to Meramec Comm College |
| Rental Garages/Car & Trailer Storage | Water/Sewer/Trash Included in Rent |



We are centrally located near the intersection of Laclede Station and Watson Roads

****Heroes Special****

Military/Police/Fire get 5% Off Rent*

**Requires 12 Month Lease*

1 Bedroom Apartments

500 Sq Feet \$595 Monthly-Security Deposit \$500

600 Sq Feet \$615 Monthly- Security Deposit \$500

Add \$6 per month per adult for water / Add \$50 per month for 6-month lease

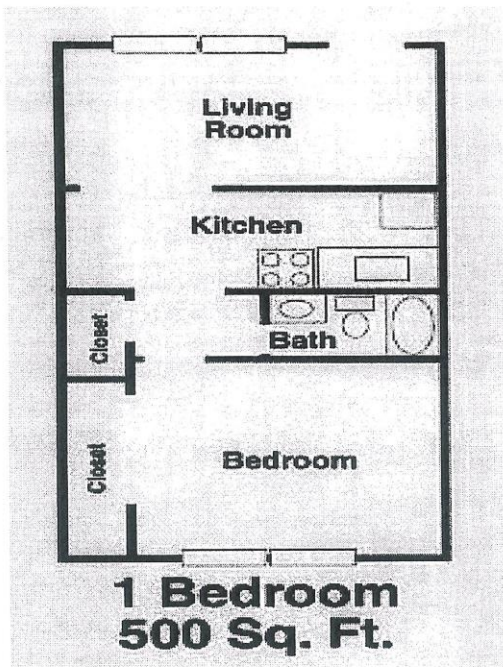
2 Bedroom Apartments

800 Sq Feet \$695 Monthly- Security Deposit \$500

830 Sq Feet \$715 Monthly- Security Deposit \$500

Add \$6 per month per adult for water / Add \$50 per month for 6-month lease

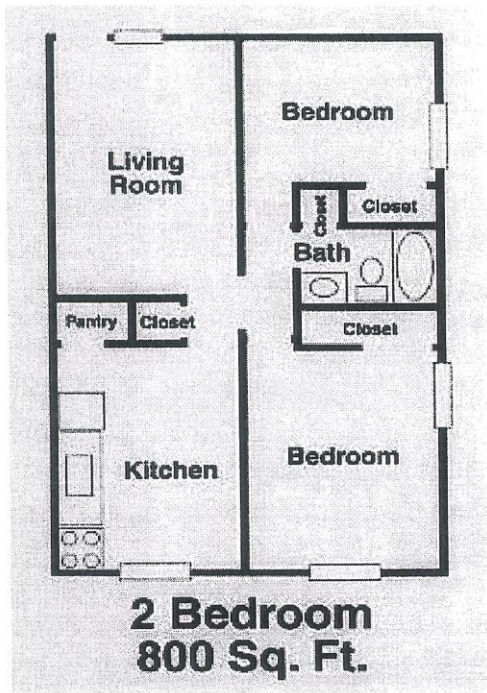
Huntington I
1 BDRM 500 Sq. Ft



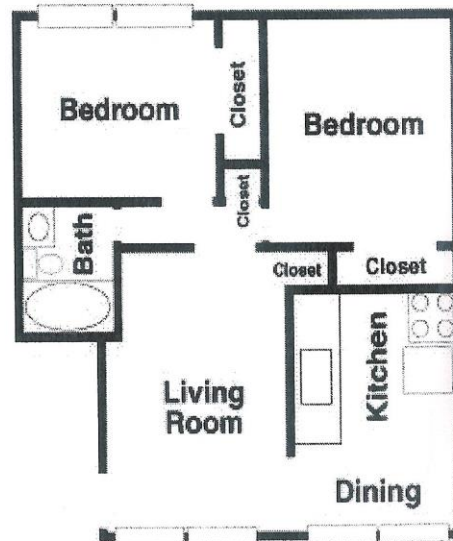
Huntington II
1 BDRM 600 Sq. Ft



Garlington I
2 BDRM/1B 800 Sq. Ft



Garlington II
2 BDRM/1B 830 Sq. Ft



Affton Schools

Affton Early Childhood Center - (314) 633-5916
Mesnier Elementary - (314) 849-5566
Gotsch Intermediate - (314) 842-1238
Rodgers Middle School - (314) 351-9679
Affton High School - (314) 638-6330

Utilities

Ameren Missouri (electric) - (314) 342-1111
Laclede Gas Company (gas) - (314)621-6960
Charter Communications (cable/internet/phone) - (800) GET-CHARTER

Our Other Communities

Woodridge Manor Apartments
Affordable 1 & 2 Bedroom Apartments Starting at \$410
High Ridge, MO – (636) 677-0515

Maryland Manor Apartments
Spacious 2 Bedroom Gardens & Townhomes Starting at \$675
Granite City, IL – (618) 219-8188

Village on the Green Apartments
Modern 1 & 2 Bedroom Apartments Starting at \$495
Sullivan, MO 63080 – (573) 860-6465

Application Fees

- \$25 per adult applicant. We accept cash, credit, debit or money order with the application.

Pet Fees

- Cats and Dogs to 25lbs are permissible, breed restrictions apply.
- Pet rent is \$30 per month per pet. There is no pet deposit or upfront fee.
- Total pets not to exceed two.

Flexible Lease Terms

- Advertised rental rates are based on a 12-month lease.
- 6-month leases are offered for an additional \$50 per month.
- Leases less than 6 months, if permitted, require the first month, last month and security deposit be paid up front.

Rent Payment Options

- We accept credit, debit, echeck, checks, and money orders. No-fee electronic payments can be made online through our web portal.
- Pay your rent bi-weekly for an additional \$10 per payment to avoid late fees.

Bad Credit & Security Deposits

- We can work with bad credit, bankruptcies, and prior evictions if the income and work history are good; however, additional up-front rent and/or security deposit may be required.

Fees & Options

- Washer and dryer hookup - \$10/mn to cover the cost of the water
- New storm door - \$100 each
- 150 SF Storage garage (limited availability) - \$110/mn
- Trailer or additional car storage on lot - \$25/mn (one car per driver living in apt is allowed at no addtl cost)

Nearby Businesses within Walking Distance

- | | | |
|-------------------|----------------|-------------------|
| • Quiktrip | CVS Pharmacy | Dobbs Tire & Auto |
| • Tower Tee Golf | Courtesy Diner | Fuzzy's Tex Mex |
| • Penn Station | Hot Shots | White Castle |
| • Jack in the Box | Club Fitness | Dollar Store |
| • Bowling Alley | Banks | Auto Mechanic |