

# HEEGE PLACE APARTMENTS

7028 Heege Road ▪ Suite 100 ▪ St. Louis ▪ MO ▪ 63123 / PO Box 270271 ▪ St. Louis ▪ MO ▪ 63127

email: [info@heegeplace.com](mailto:info@heegeplace.com) ▪ website: [www.heegeplace.com](http://www.heegeplace.com)

Ph(314)729-0479 ▪ Fx(314)842-2772

## 1 & 2 Bedroom Garden Apartments

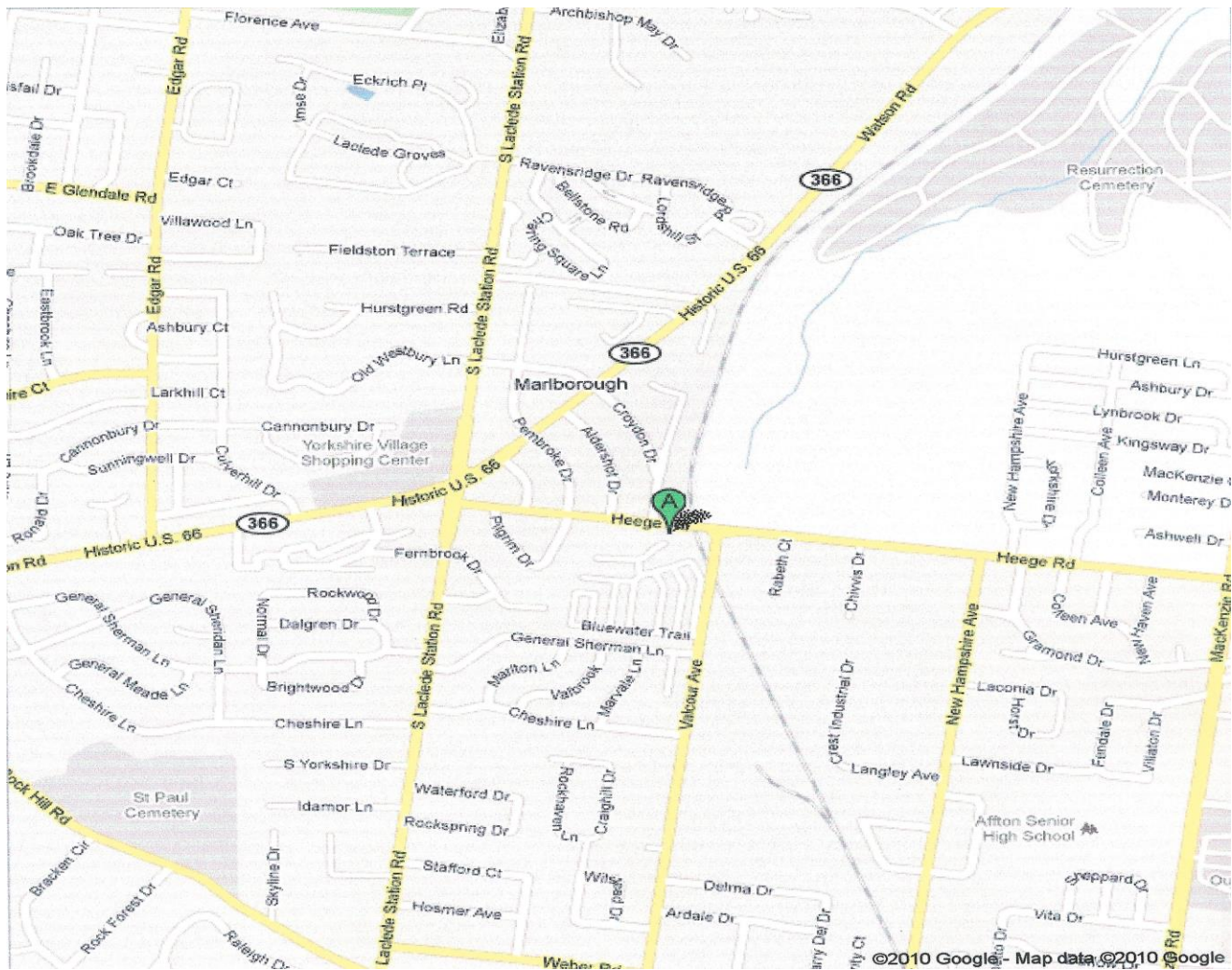


- AVOID THE 1% ST. LOUIS CITY EARNINGS TAX LIVING HERE!!
- Every apartment includes central air and heat as well as a refrigerator and range
- We are pet friendly, accepting cats and dogs up to 25lbs at full maturity
- We offer flexible leasing, security deposit, and payment options
- Within minutes of numerous colleges and 15 minutes to Clayton
- Improve your credit score with us through our affiliation with Experian



## Property Features

- |                                      |                                    |
|--------------------------------------|------------------------------------|
| Bark Park                            | Newer Roofs                        |
| Pet Friendly                         | Carpet & Vinyl                     |
| Coin Laundry                         | Swimming Pool                      |
| Off-Street Parking                   | Resident Manager                   |
| On-Site Maintenance                  | Cable Connections                  |
| Free Storage Lockers                 | Close to Public Trans              |
| AAA Rated Affton Schools             | 8 min to Webster Univ              |
| Washer/Dryer Hookups Available       | 15 min to Meramec Comm College     |
| Rental Garages/Car & Trailer Storage | Water/Sewer/Trash Included in Rent |



*We are centrally located near the intersection of Laclede Station and Watson Roads*

## **\*\*Heroes Special\*\***

**Military/Police/Fire get 5% Off Rent\***

*\*Requires 12 Month Lease*

### **1 Bedroom Apartments**

500 Sq Feet \$575 Monthly-Security Deposit \$500

600 Sq Feet \$615 Monthly- Security Deposit \$500

Add \$6 per month per adult for water / Add \$50 per month for 6-month lease

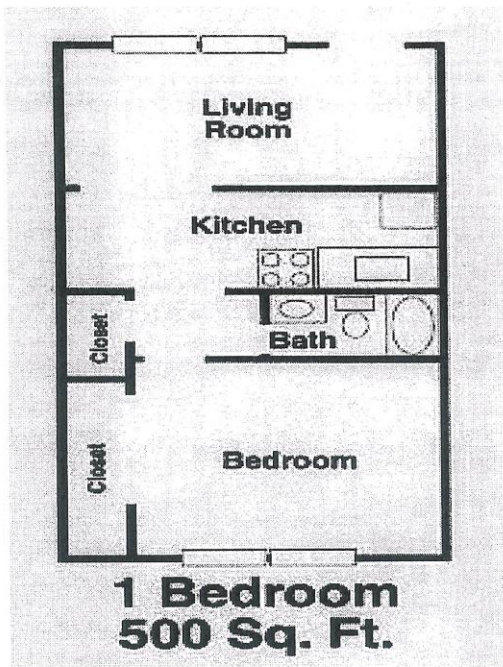
### **2 Bedroom Apartments**

800 Sq Feet \$695 Monthly- Security Deposit \$500

830 Sq Feet \$715 Monthly- Security Deposit \$500

Add \$6 per month per adult for water / Add \$50 per month for 6-month lease

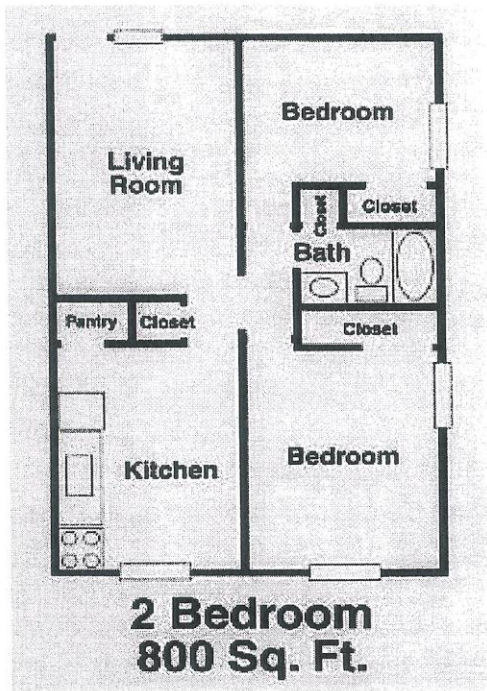
**Huntington I**  
**1 BDRM 500 Sq. Ft**



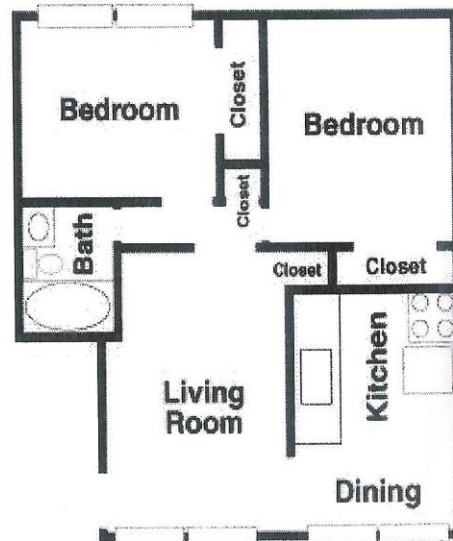
**Huntington II**  
**1 BDRM 600 Sq. Ft**



**Garlington I**  
**2 BDRM/1B 800 Sq. Ft**



**Garlington II**  
**2 BDRM/1B 830 Sq. Ft**



## Affton Schools

Affton Early Childhood Center - (314) 633-5916  
Mesnier Elementary - (314) 849-5566  
Gotsch Intermediate - (314) 842-1238  
Rodgers Middle School - (314) 351-9679  
Affton High School - (314) 638-6330

## Utilities

Ameren Missouri (electric) - (314) 342-1111  
Laclede Gas Company (gas) - (314)621-6960  
Charter Communications (cable/internet/phone) - (800) GET-CHARTER

## Our Other Communities

Woodridge Manor Apartments  
Affordable 1 & 2 Bedroom Apartments Starting at \$410  
High Ridge, MO – (636) 677-0515

Village on the Green Apartments  
Modern 1 & 2 Bedroom Apartments Starting at \$495  
Sullivan, MO 63080 – (573) 860-6465

---

### ***Application Fees***

- \$25 per adult applicant. We accept cash, credit, debit or money order with the application.

### ***Pet Fees***

- Cats and Dogs to 25lbs are permissible, breed restrictions apply.
- Pet rent is \$30 per month per pet. There is no pet deposit or upfront fee.
- Total pets not to exceed two.

### ***Flexible Lease Terms***

- Advertised rental rates are based on a 12-month lease.
- 6-month leases are offered for an additional \$50 per month.
- Leases less than 6 months, if permitted, require the first month, last month and security deposit be paid up front.

### ***Rent Payment Options***

- We accept credit, debit, echeck, checks, and money orders. No-fee electronic payments can be made online through our web portal.
- Pay your rent bi-weekly for an additional \$10 per payment to avoid late fees.

### ***Bad Credit & Security Deposits***

- We can work with bad credit, bankruptcies, and prior evictions if the income and work history are good; however, additional up-front rent and/or security deposit may be required.

### ***Fees & Options***

- Washer and dryer hookup - \$10/mn to cover the cost of the water
- New storm door - \$100 each
- 150 SF Storage garage (limited availability) - \$115/mn
- Trailer or additional car storage on lot - \$35/mn (one car per driver living in apt is allowed at no addtl cost)

### ***Nearby Businesses within Walking Distance***

- |                   |                |                   |
|-------------------|----------------|-------------------|
| • Quiktrip        | CVS Pharmacy   | Dobbs Tire & Auto |
| • Tower Tee Golf  | Courtesy Diner | Fuzzy's Tex Mex   |
| • Penn Station    | Hot Shots      | White Castle      |
| • Jack in the Box | Club Fitness   | Dollar Store      |
| • Bowling Alley   | Banks          | Auto Mechanic     |